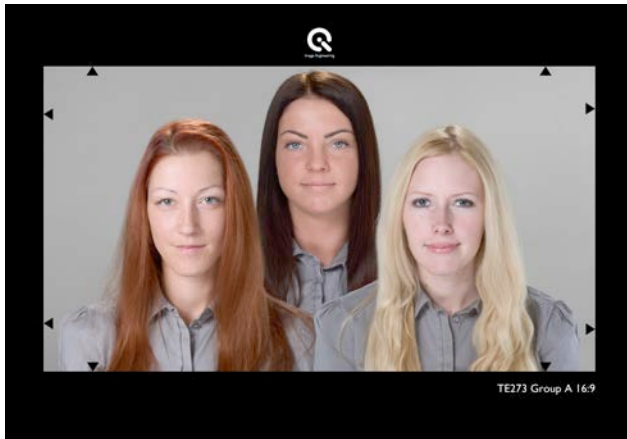
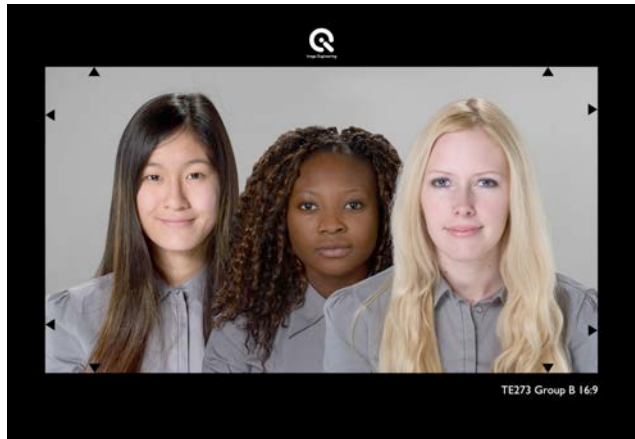


# NATURAL SKIN TONE TEST CHARTS

## TRANSMISSIVE

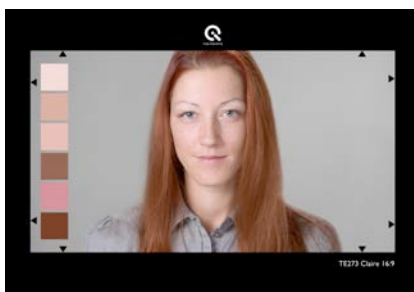


TE273 Group A

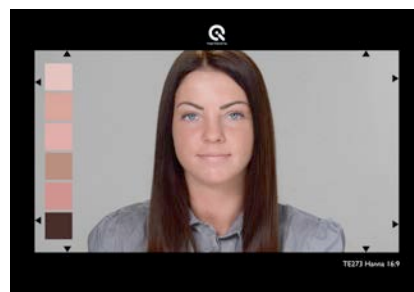


TE273 Group B

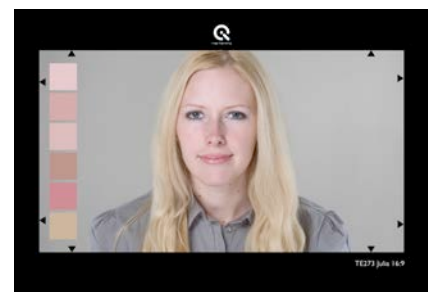
The Natural Skin Tone Test Charts TE273 are designed for evaluating the flesh tone rendition of electronic cameras. The series provides different skin tones of natural, not made-up persons. Therefore the reproduction of the natural texture of the skin can also be evaluated. Five single portraits and two different groups are available.



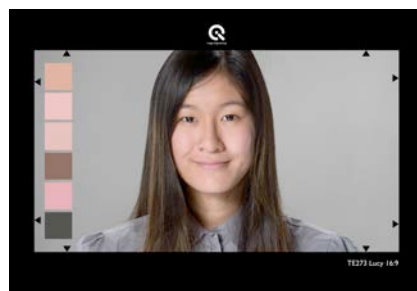
TE273 Claire



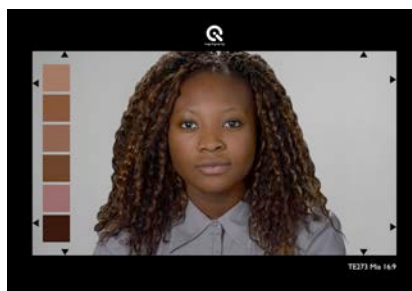
TE273 Hanna



TE273 Julia





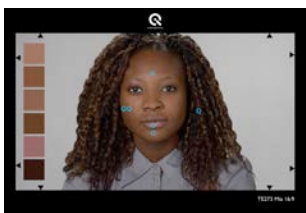


TE273 Lucy



TE273 Mia

The skin tones of the marked regions in each face/hair are repeated in the patches at the left. The color coordinates in the CIE-L\*a\*b\*-system for each patch are mentioned in the table below.

	Chart	L*	a*	b*
TE273 Claire		94	6	4
		81	15	11
		87	14	10
		47	14	9
		76	29	5
		37	15	9
TE273 Hanna		87	12	7
		78	19	11
		82	21	9
		63	11	8
		70	21	9
		29	2	-6
TE273 Julia		87	10	1
		76	13	6
		81	9	3
		65	9	9
		71	26	5
		76	3	13
TE273 Lucy		83	16	13
		90	16	7
		87	12	7
		49	8	4
		86	23	4
		72	0	-4
TE273 Mia		52	11	8
		40	14	8
		43	14	7
		33	8	0
		48	14	1
		27	-1	-4

The mentioned L\*a\*b\* values are batch measured. Values of the individual chart can deviate.