

iQ-Align for CAL1 / CAL3

User Manual

August 30, 2016





CONTENT

1 INTRODUCTION	3
1.1 Intended use	3
1.2 Product variants	3
1.3 Foreseeable misuse	3
1.3.1 Stucked linear guidance	3
2 GETTING STARTED	3
2.1 Scope of delivery	3
2.2 Commissioning	4
2.2.1 Assembly instructions for CAL1	4
2.2.2 Assembly instructions for CAL3	6
3 OPERATING INSTRUCTIONS HARDWARE	7
3.1 Camera positioning	7
4 ADDITIONAL INFORMATION	7
4.1 Disposal instructions	7
5 TECHNICAL DATA SHEET	8



1 INTRODUCTION

Important information: Read the manual carefully before using the device.

Inappropriate utilization may cause damages to the device, to the DUT (device under test) and/or other components of your setup.

Keep these instructions in a safe place and pass them to any future user.

1.1 Intended use

Camera align system (for CAL1 and CAL3) based on a linear guidance in combination with a mobile mount allows adjustment of the DUT on X, Y and Z axes. Fix the end position with the locking wheels.

- Only suitable for indoor use.

1.2 Product variants

iQ-Align is available in two variants:

- iQ-Align for CAL1
- iQ-Align for CAL3

1.3 Foreseeable misuse

1.3.1 Stucked linear guidance

If you cannot turn the wheels for the depth and horizontal alignment, unlock the locking wheels.

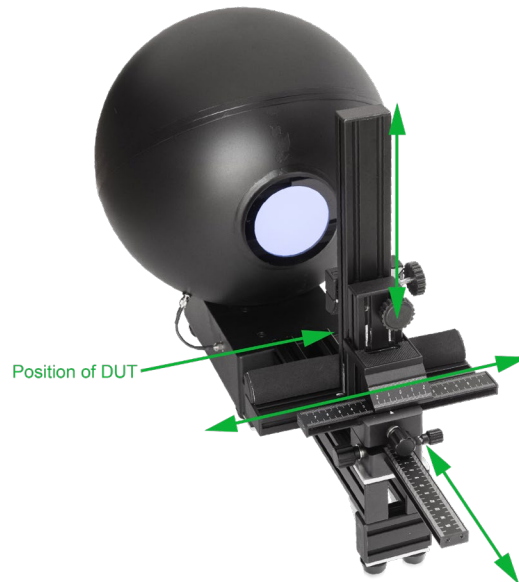
2 GETTING STARTED

2.1 Scope of delivery

iQ-Align, attachment parts (for CAL1 or CAL3), manual

2.2 Commissioning

2.2.1 Assembly instructions for CAL1



iQ-Align mounted to CAL1

1. Unplug CAL1 from power and remove all cables. Lay your CAL1 on the side and unscrew the four feet of the device.





2. Place the forepart for connecting *CAL1* with *iQ-Align for CAL1* on the bottom side of the device. Now use longer screws M4x14 to fix it together with the feet to *CAL1*.

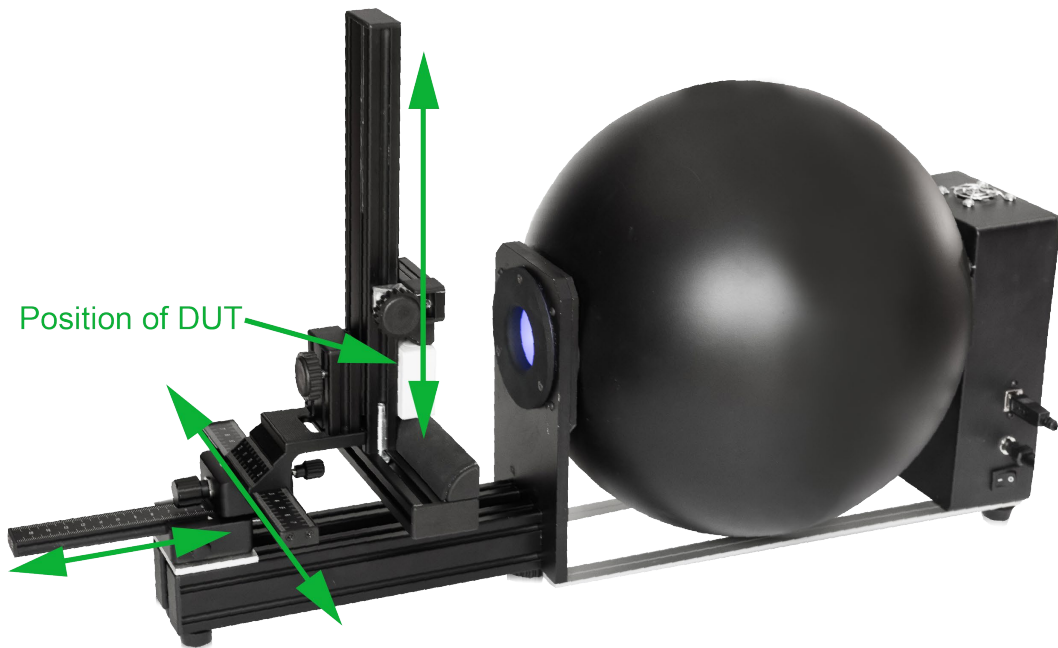


3. Rotate *CAL1* on its back and mount *iQ-Align for CAL1* on the intended position on the front side. Screw it on with two screws M5x8.



4. *CAL1* with *iQ-Align for CAL1* is now ready for use.

2.2.2 Assembly instructions for CAL3

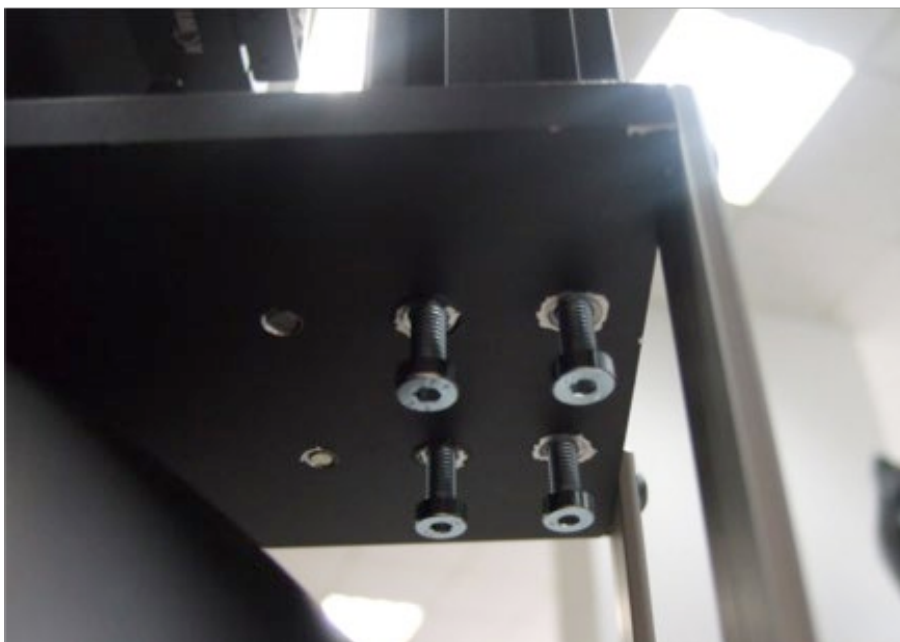


iQ-Align mounted to CAL3

5. Unplug CAL1 from power and remove all cables. Lay your CAL1 on the back. Place *iQ-Align for CAL3* on the intended position on the front.



6. Fix iQ-Align for CAL3 with 4 screws (M5x20, DIN7984) to CAL3 behind the front plate.



7. CAL3 with iQ-Align for CAL3 is now ready for use.

3 OPERATING INSTRUCTIONS HARDWARE

3.1 Camera positioning

Fix the DUT in iQ-Mobilemount.

Unlock the locking wheel and adjust the DUT position in X direction. Fix the locking wheel and proceed with the other axes unless your DUT is placed exactly in the center of the diffuser.

4 ADDITIONAL INFORMATION

4.1 Disposal instructions

After the service life of CAL3, it must be disposed properly. Electrical and electromechanical components are included in CAL3. Observe your national regulations. Make sure that CAL3 cannot be used by third parties after disposing of it.

Contact Image Engineering if assistance for disposal is required.



5 TECHNICAL DATA SHEET

See annex for the technical data sheet. It can be downloaded at the website of Image Engineering as well: www.image-engineering.com.